

ISIS – Input/Output Vers. 2.00

1. Installation:

For installation put the program CD into your disc drive. If the setup program don't start automatically, then you will start setup.exe manual from the CD.

When you start the program for first time, you have to registry the software.

Softwareregistrierung...

ID: 281172534

Firma:

Vorname:

Nachname:

* Faxnummer:

* angeben bei Faxregistrierung

Seriennummer: 155I C8E4 TY2N P61H

Online E-Mail Fax *

Freischaltcode eingeben:

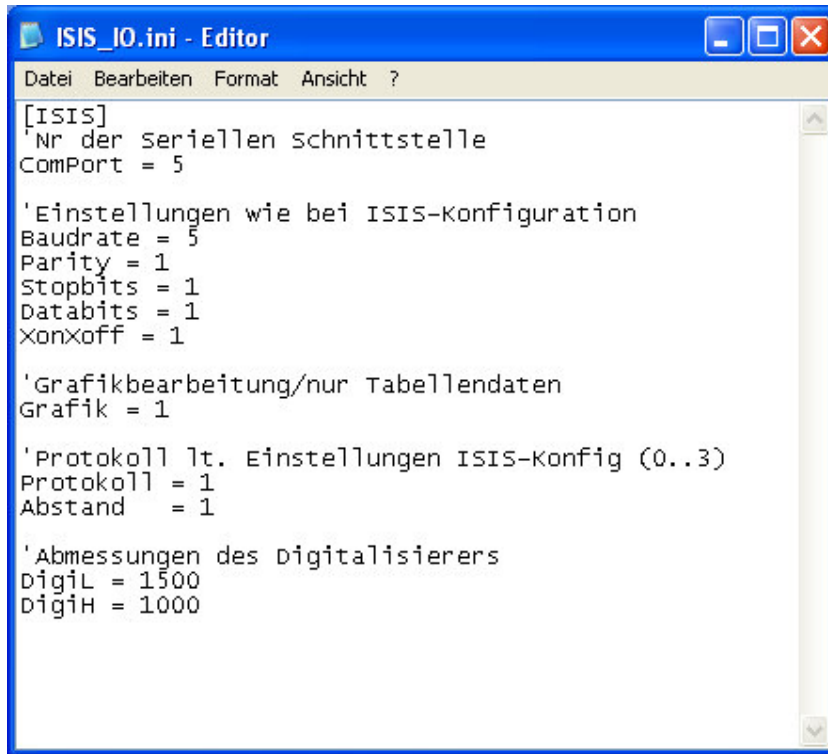
OK

Please fill in the registration form and follow the instruction on screen.

You have two possibilities for registration. – You can use the fax form (note: don't forget to fill in your fax number) or you can do it by email. In both cases you will receive your registration key, which you will need for using the program.

2. Program settings: (ISIS_IO.INI)

The isis_io.ini file contains the communication settings for your digitalizer.



```
ISIS_IO.ini - Editor
Datei Bearbeiten Format Ansicht ?
[ISIS]
'Nr der seriellen schnittstelle
ComPort = 5

'Einstellungen wie bei ISIS-Konfiguration
Baudrate = 5
Parity = 1
Stopbits = 1
Databits = 1
xonxoff = 1

'Grafikbearbeitung/nur Tabellendaten
Grafik = 1

'Protokoll lt. Einstellungen ISIS-Konfig (0.3)
Protokoll = 1
Abstand = 1

'Abmessungen des Digitalisierers
DigiL = 1500
DigiH = 1000
```

You can edit the file by double click.

3. to digitalize outlines/contour:

After you have started the program ISIS, you will see the “ISIS”-program menu:

```
-- I S I S --
1=point 2=line
3=arc 4=polyl.
5=chang. 6=save
```

On pressing a number key on the ISIS control panel you select the command you need. You will get automatically to the next menu. The distinction of commands is important for the DXF, which will generated by the program, because the data will be created by your selected command, for example a point will be a point in your CAD application. Please note the point style setting in your CAD-program (see your CAD-documentation). In some cases points appear as small pixel on your screen and can be noticed hardly.

You can select the last endpoint with the command “last point” (8=l.point) in all drawing feature. The first point of your new drawing object will be the endpoint of your last

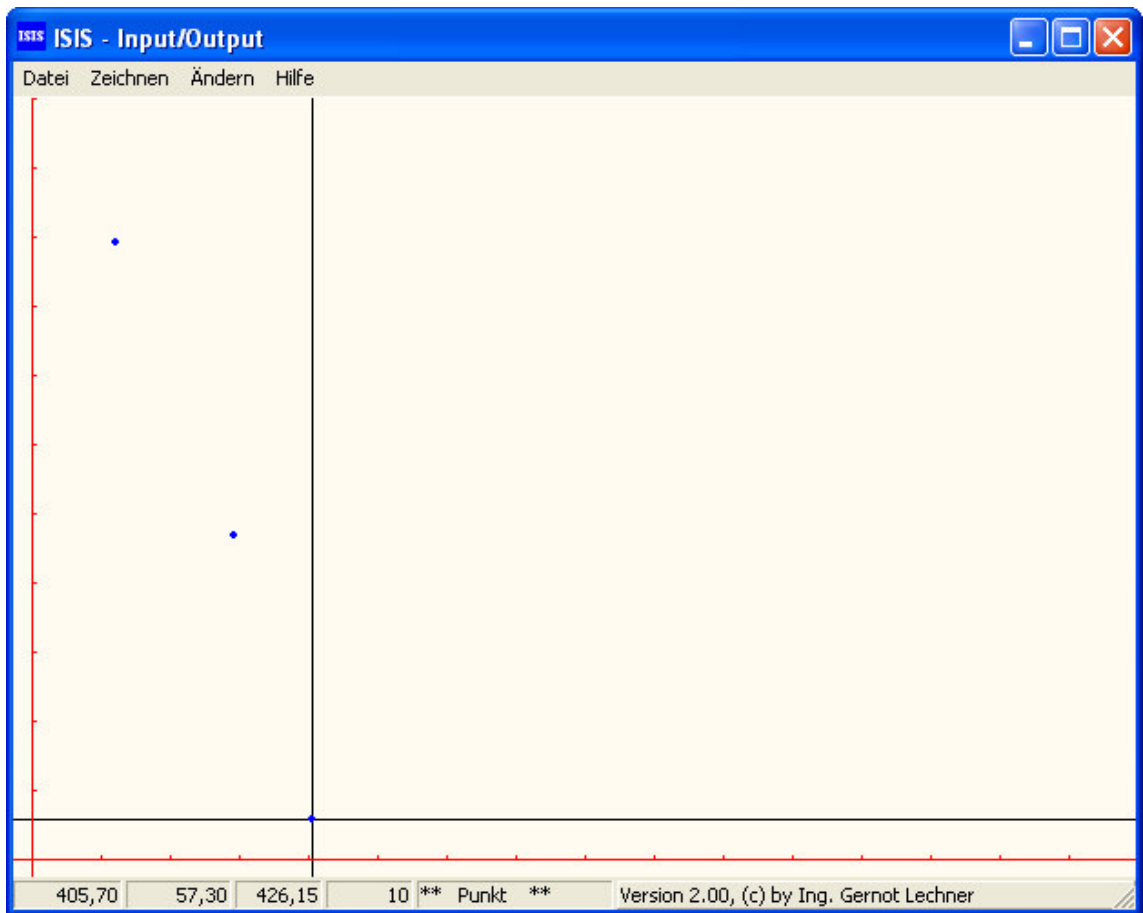
drawing object.

Every new submenu you can exit by “exit-key” (0=exit).

4. drawing commands:

points:

with the command point you can digitalize point co-ordinate which will be shown as disc on the screen.



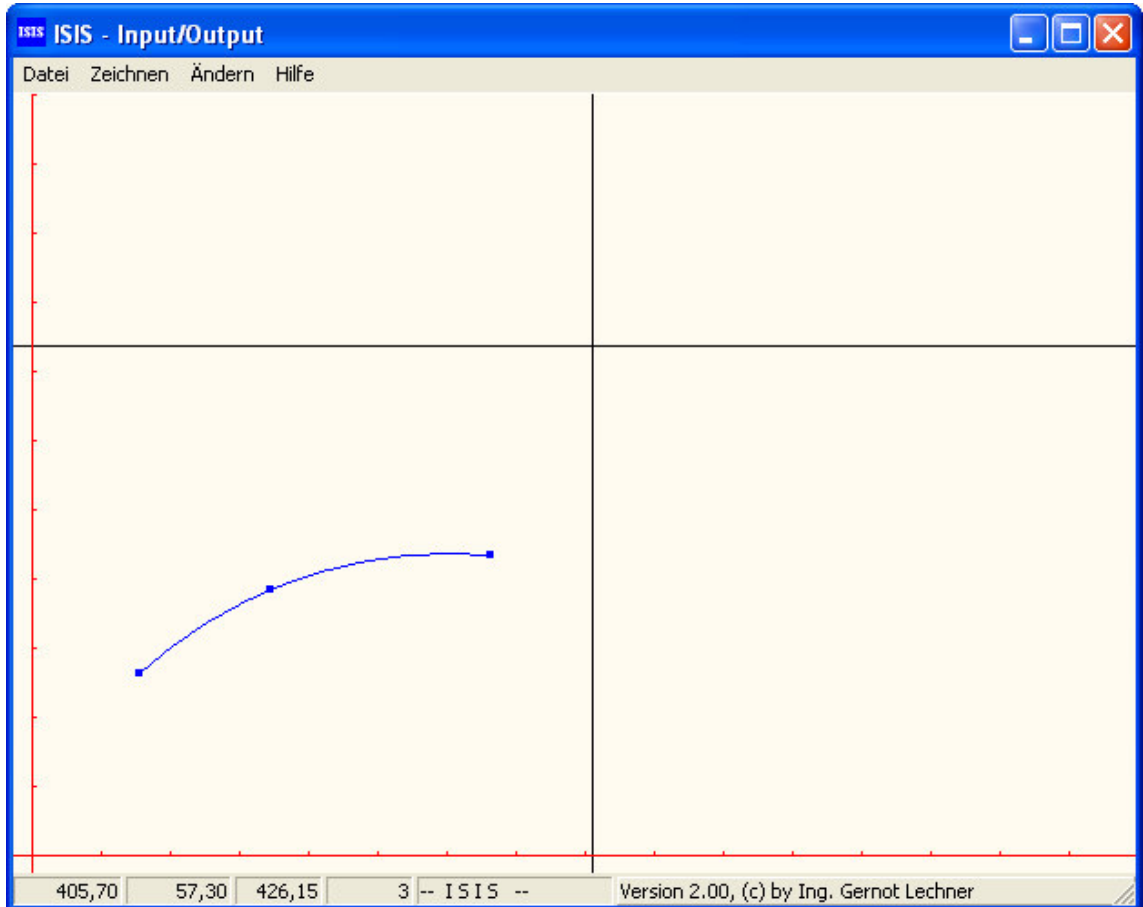
Note: when you enter the point submenu, you can select 8=l.point for using the last saved point (it works like an object snap in AutoCAD)

LINE:

This command works like point mode. On the graphic screen you will see a line after input of the second point. If you want to start a line from the endpoint of your last drawn object you can use the command “last point” (8=l.point).

ARC:

An arc is defined with three points. After the last point is given, you will see the arc on your graphic screen. The scanned points are shown on screen as filled squares. Here you can also use the last endpoint as starting point.



The filled squares appear immediately after transmission.

POLYLINE:

Polyline works like line, with the difference that you must press a key to exit. The given points will be connected to a common line with many different points in one object. The points can be transmitted in streaming mode or point mode. Each data string will be a part of the line.

5. **Radius compensation:**

OFFSET+/OFFSET-:

If you set a contour with the scanning wheel, you can offset the outline by using the options “offset +” and ”offset –“ in the submenu. +/- define if you want to enlarge or reduce the outline.

6. **Delete objects:**

By using the submenu “change” (5=chang.) in the ISIS main menu you can delete all or only the last drawn objects. With key “0” you can return to the ISIS main menu.

LAST OBJECT:

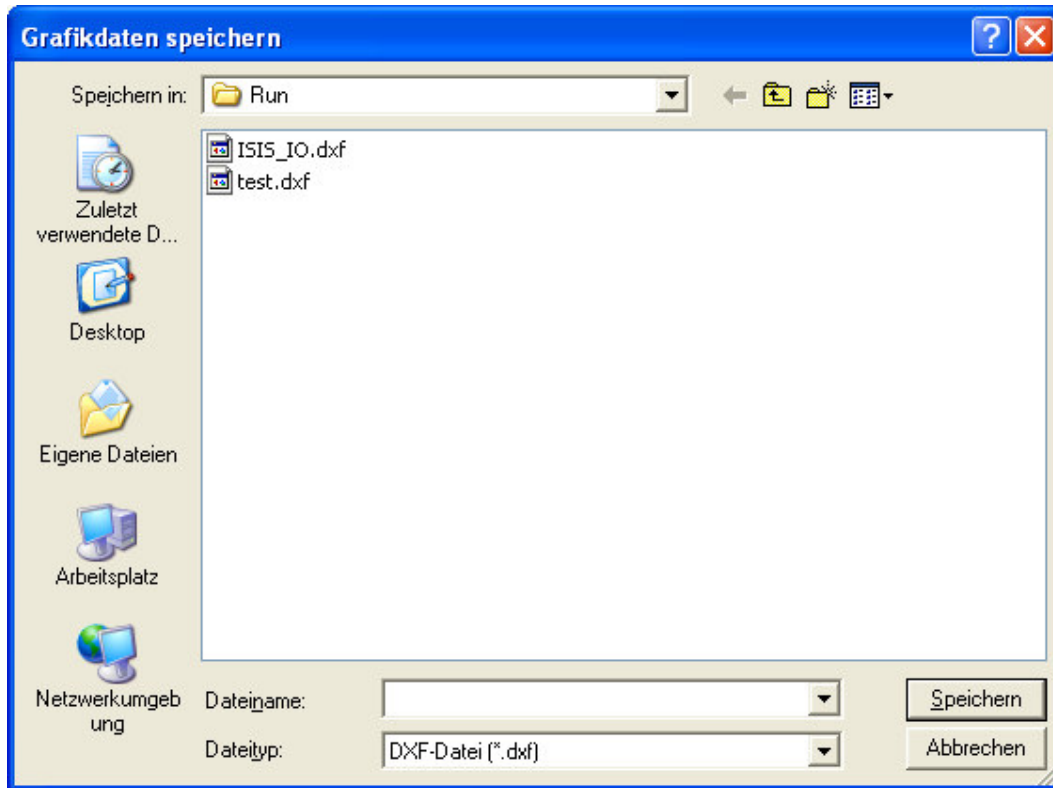
If you want to delete only the last object use this option and commit the command with 1=YES, else cancel it by pressing 0=NO.

ALL OBJECTS:

You can delete with “all objects” the whole graphic memory after you commit with 1=YES.

7. Save graphic data:

If you want to save your graphic data, use “save” (6=save) in your ISIS main menu or select “file”, “save...” from the pulldown menu in the ISIS program.



When you use the control panel of your ISIS board, you can select

- 1=point list (TXT) or
- 2=DXF-file (DXF).

Point list generate a ASCII file in the program directory of ISIS, which is named ISIS_IO.TXT. DXF-file generates a AutoCAD compatible DXF, which is being saved in the program directory named ISIS_IO.DXF. This DXF you can import in the most graphic programs like CorelDraw, AutoCAD, ...

If you want to define the filename or the directory, please use “file”, “save as...” from the pulldown menu of the ISIS program. You can change the file type to specify the output between DXF and TXT.